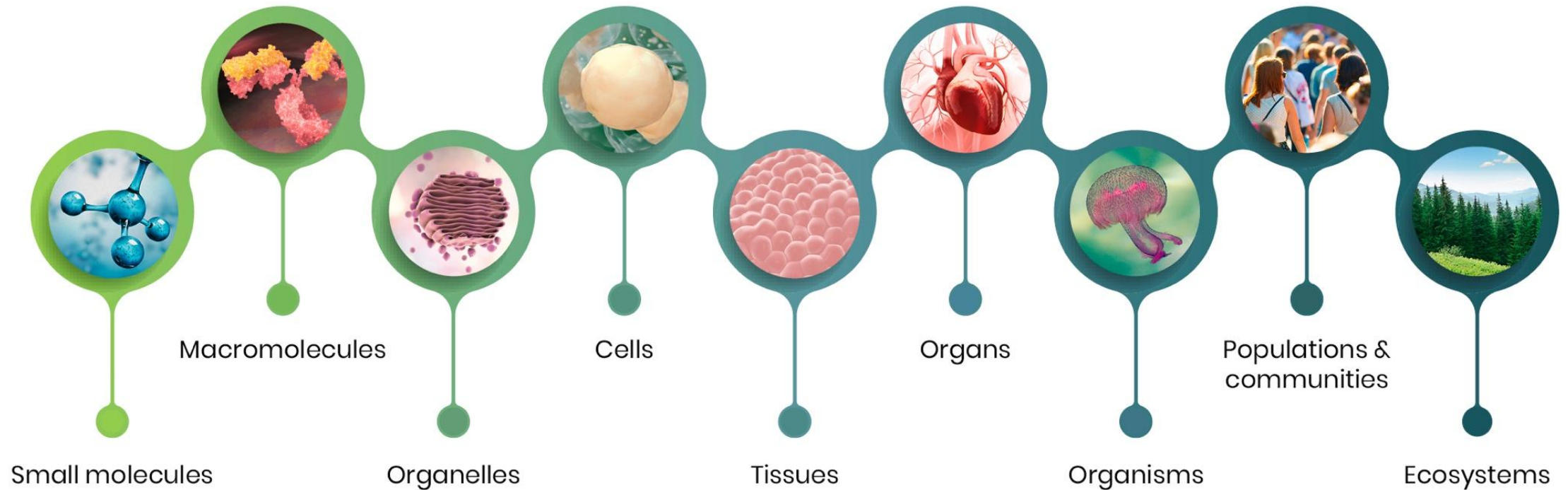


SciLifeLab genererar olika typer av data



Olika sätt vi arbetar med data



Datahantering -
helpdesk

Lagring, användning
& åtkomst

Känsliga data
(FEGA Sweden)

Kurser och training

Spåra flöden av
dataset

Metadata

Publikations-
databas

Öppen vetenskap
och FAIR data

Datahanterings-
planer: support och
utbildning

SciLifeLab
Data Repository

Datadelning

Outreach

Stöd till infrastruktur

Resurser och
verktyg för
datahantering

Stöd till SciLifeLab
program (ex DDLS)

SciLifeLab Data Platform



SciLifeLab Data Platform
Hub for data-driven life science research in Sweden

About Contact
Services Resources Data Highlights Jobs Funding Calls Events & Training

Check out our latest resource and data highlight!

Services [See all services](#)

- SciLifeLab Data Repository**
Repository for publishing any kind of research-related data, posters, presentations, and more!
- Hosting on the Data Platform**
Details about how researchers, research groups, and organisations can apply for hosting via the SciLifeLab Platform.
- Swedish Pathogens Portal**
Facilitates the sharing and promotion of pandemic preparedness and infectious disease data

Resources [See all resources](#)

- Compute resources in Sweden**
Information about the compute resources (primarily for hosting and analysis) available in Sweden, as well as how to apply.
- Storage resources in Sweden**
Information about the storage resources available in Sweden for researchers, as well as how to apply.
- Alternative metrics for impact**
Information about alternative metrics, including what they are, their importance to your research, and how to maximise your scores.

Data Highlights [See all highlights](#)

- What's new? [See all news](#)**
 - September 29, 2023
New resource on using alternative metrics
 - September 20, 2023
New highlight details a large study investigating the initiation of replication in E. coli.
 - September 7, 2023
Information about accessing storage resources added
 - August 8, 2023
Launch of resources section
- About this platform [Read more](#)**

The SciLifeLab Data Platform is a technical environment offering data-centric tools and databases as well as an overarching website with the goal to support and accelerate data-driven life science research in Sweden. The services hosted on the Platform are available to all life science researchers in Sweden. The platform is maintained by the SciLifeLab Data Centre.

The services hosted on the SciLifeLab Data Platform adhere to the values of open science, transparent research, and FAIR as well as good data management practises throughout the data life cycle.

Get your work featured!

Beräkningsresurser

Lagring

Alternativa metrics

Data Stewardship Wizard (DSW)



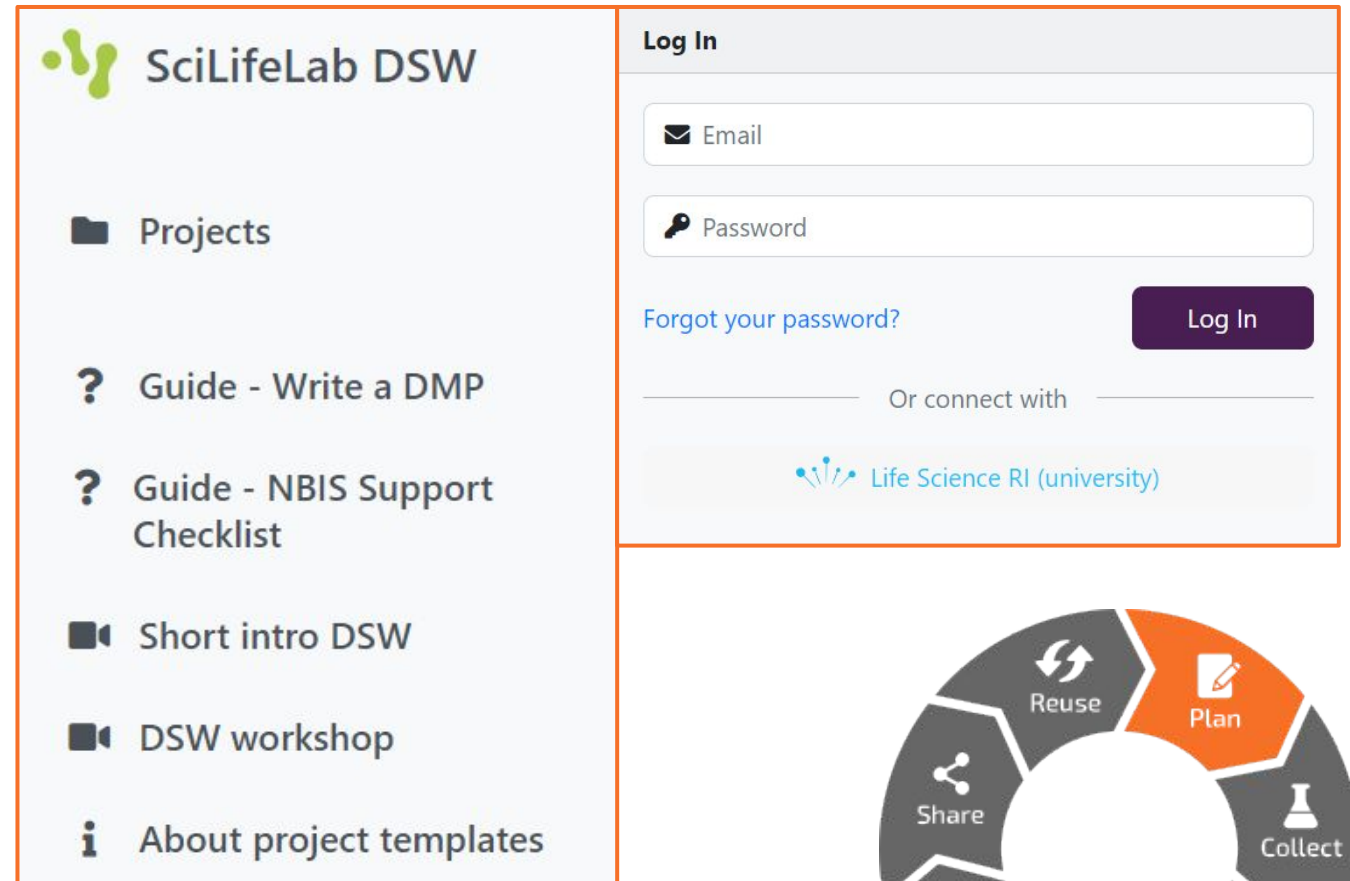
- ett verktyg för att skapa datahanteringsplaner (DMP:er)

- SciLifeLab har en egen instans av DSW med ett interaktivt frågeformulär specifikt för life science.
- **Templat** som är specifika för anslagsgivare som **Vetenskapsrådet** och **H2020**.
- Inlogg genom att använda universitetskontot (SWAMID).
- Om du behöver **hjälp**? Vi har ett dedikerat team som erbjuder support.

Gå till:

<https://dsw.scilifelab.se>

youtu.be/HY2DVnNGkAs
(kort intro till DSW)

A screenshot of the SciLifeLab DSW (Data Stewardship Wizard) interface. The interface is divided into two main sections. The left section, titled 'SciLifeLab DSW', contains a list of navigation options: 'Projects', 'Guide - Write a DMP', 'Guide - NBIS Support Checklist', 'Short intro DSW', 'DSW workshop', and 'About project templates'. The right section, titled 'Log In', contains a login form with fields for 'Email' and 'Password', a 'Log In' button, a 'Forgot your password?' link, and a 'Or connect with' section featuring a 'Life Science RI (university)' link. Below the login section is a circular diagram representing the data stewardship process, with segments for 'Reuse', 'Plan', 'Collect', 'Process', 'Analyse', 'Preserve', and 'Share'. The 'Plan' segment is highlighted in orange.

Events: Data Management Plans in Practise



- **Samarbete** med universitetsbiblioteken vid Uppsala och Umeå universitet
- **Inbjudna anslagsgivare**
- **Demo** av DMPonline och DSW
- **Öppet** för forskare och intresserade från alla forskningsområden

Data Management Plans in Practise

DMP:s from a funder's perspective – listen to representatives from Vetenskapsrådet, Riksbankens Jubileumsfond, Forte, and Knut and Alice Wallenberg Foundation. *Practical demo* - presentation of the tools DMPonline and Data Stewardship Wizard. This event is open to researchers from all disciplines.

More and register: [scilifelab.se/event/data-management-plans-in-practise/](https://www.scilifelab.se/event/data-management-plans-in-practise/)

- →



<https://www.scilifelab.se/event/data-management-plans-in-practise/>

Dela data



- **Publicera dina data så tidigt som möjligt, och så sent som nödvändigt.**
 - **Embargo** kan appliceras
 - Vi kan erbjuda **hands-on support** till forskare för att lägga upp data in de flesta europeiska datarepositorier
 - **Minimerar risken för att förlora data och metadata**
 - **Humandata**

Datadelning

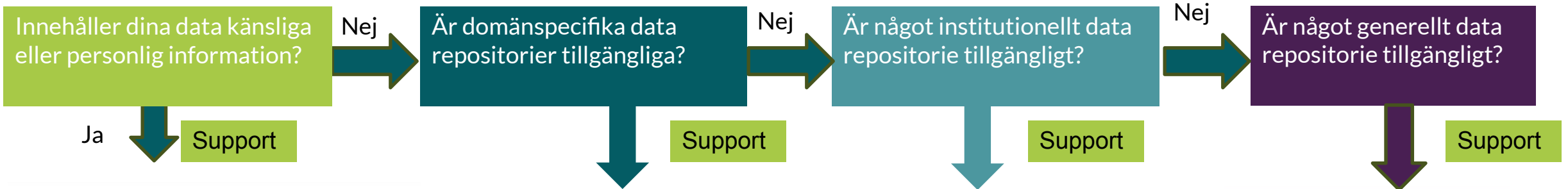
FAIR principerna

Humandata

domänspecifika repositorier



Välj rätt datarepositorie för dina data



Kom ihåg att göra metadata tillgängliga i t.ex. SciLifeLab Data Repository även om dina känsliga data inte kan göras öppet tillgängliga så att andra vet hur de ska göra för att ansöka om att få tillgång.

SciLifeLab Data Repository



- Institutionell instans av FigShare
- Publicering av **generella forskningsdata, kostnadsfritt**
- **Tillgängligt för forskare** verksamma vid alla svenska lärosäten som arbetar inom SciLifeLabs forskningsområden.
- Generella data som inte passar in i specifika repositorer.
- Möjligt att välja vilken **licens** och **embargo**.



scilifelab.se/data/repository/submission/

Varför välja SciLifeLab Data Repository?

- Data ges en permanent identifierare, DOI
- Nästan alla filformat kan användas
- Koppla data till publikation
- Indexerat av Google Dataset Search och Google Scholar
- Koppla data till anslagsgivare genom Dimensions
- Integration med GitLab, GitHub, Bitbucket och ORCID
- Dina data blir lätta att hitta och återanvända.
- Vi har en egen granskningsprocess för att få användbara metadata
- Vi kan även skapa metadata-poster för känsliga eller personliga data som inte kan delas.



Och det ökar FAIRness för dina data



Dela en databeskrivning



Hur kan jag logga in?

- Du kan enkelt logga in med hjälp av samma användaruppgifter som du loggar in på ditt universitetskonto.

Hur kan jag lägga upp en beskrivning om mina forskningsdata?

- Läs vår dokumentation "submission guidelines" och följ flödesschemat.
- Alla databeskrivningar kommer genomgå en granskningsprocess och manuell kurering av ett dedikerat team
- Supportfunktion till forskare som behöver hjälp med att dela data eller skriva en databeskrivning

scilifelab.se/data/repository/submission/



RDM Guidelines

- en informationshub
för datahantering för
svensk life science
forskning

data-guidelines.scilifelab.se/

SciLifeLab RDM Guidelines

Knowledge hub for the management of life science research data in Sweden

Get support · About · Contact

Home · Research data life cycle · Topics

The purpose of these guidelines is to serve as an information resource to life science researchers in Sweden regarding research data management.

Research data management (RDM) concerns the organisation, storage, preservation, and sharing of data that is collected or analysed during a research project. Proper planning and management of research data will make project management easier and more efficient while projects are being performed. It also facilitates sharing and allows others to validate as well as reuse the data.

Research data life cycle

The research data life cycle is divided into several phases, which are listed below: Collect, Share, Analyse, Preserve, Reuse.

Get Support

Do you need support with research data management?

We offer support to anyone involved in life science research that is affiliated with a Swedish university or research institute.

[Click here to get support](#)

Meet a Data Steward

Join SciLifeLab Data Centre & NBIS and get data management support. Each event consists of a 15 minutes mini-lecture and a 45 minutes Q&A.

Next date: Sep 19, 2023

[More information on the event page](#)

Events & Training

Upcoming conferences, webinars, workshops, and training opportunities in Sweden related to data-driven life science can be found on the SciLifeLab Data Platform.

[Click here to see the Data Platform](#)



Data Centre

The purpose of these guidelines is to serve as an information resource to life science researchers in Sweden regarding research data management.

Research Data Management

Research Data Management (RDM) concerns the organisation, storage, preservation, and sharing of data that is collected and analysed during a research project. Proper planning and management of research data will make project management easier and more efficient while projects are being performed. It also facilitates sharing and allows others to validate as well as reuse the data.

Research data life cycle

The research data life cycle can be divided into several phases as seen in the wheel below; **plan, collect, process, analyse, perserve, share** and **reuse**. Click on a section of the wheel below to get an introduction to that phase of the research data life cycle, including information on relevant resources and training material.



RDM life cycle from RDMkit licensed under [Creative Commons Attribution 4.0 International License](#).

Topics

Click on either of the links below to get an overview of individual research data management topics.

Working with human data ⌵

Data transfer

Data management

Data security

Data storage

Data sharing

Get Support

Do you need support with research data management?

We offer support to anyone involved in life science research that is affiliated with a Swedish university or research institute.

[Click here to get support](#)

Meet a Data Steward

Join SciLifeLab Data Centre & NBIS and get data management support. Each event consists of a 15 minutes mini-lecture and a 45 minutes Q&A.

Next date: Nov 21, 2023

[More information on the event page](#)

Events & Training

Upcoming conferences, webinars, workshops, and training opportunities in Sweden related to data-driven life science can be found on the SciLifeLab Data Platform.

[Go to Events & Training on the Data Platform](#)

Calls & Jobs

Available positions and funding opportunities within data-driven life science can be found on the SciLifeLab Data Platform.

[Go to calls on the Data Platform](#)

[Go to jobs on the Data Platform](#)



data-guidelines.scilifelab.se

Topics

Click on either of the links below to get an overview of individual research data management topics.

[Working with human data](#)



[Data transfer](#)

[FAIR principles](#)

[Metadata](#)

[University RDM resources](#)

[What is RDM?](#)

[README files](#)

Calls & Jobs

Available positions and funding

University RDM resources

Most often there are information resources at your university regarding research data management (RDM). There might be policies that you as an employee need to be aware of, tools offered to help you apply good data management practices in your projects, and support offered to answer questions that arise while working with your data throughout its life cycle. Please find below a collection of university specific links and contact information.

Research data support, guidelines and policies

Many universities have established a Research Data Office (RDO) or Data Access Unit (DAU) in order to help researchers with data management questions. Also, the libraries can most often give advice or redirect to local instances. In the table below you can find links and contact information to local offices and resources.

Research Data Office	Contact	Research data guidelines and/or policies
Chalmers University of Technology	dataoffice@chalmers.se	
Karolinska Institutet	rdo@ki.se	Guidelines for research Guidelines for research documentation and data management
KTH Royal Institute of Technology	researchdata@kth.se	Guidelines on managing research data
Linköping University	datamanagement@liu.se	
Linnaeus University	dau@lnu.se	Research data policy (in swedish)
Lund University	See web page for contact information	
Stockholm University	opendata@su.se	Policy for open science
SLU Swedish University of Agricultural Sciences	dms@slu.se	Data Management Policy

Guidelines

[Research data life cycle](#)
[Topics](#)
[Resources](#)

Quick links

[Get support](#)
[About](#)
[Contributors](#)

For more data-driven resources:



Site maintained by:



If you notice anything that isn't up to date, or want to suggest an addition, then please get in touch using our [contact form](#) or [email us](#).

Resources

Catalogue of data management resources

[Home](#) / Resources

Please find below resources concerning data management in form of training, guidance and tools. Use the left-hand filters in order to select type of resource, phase of the research data life cycle, and / or level of skill required in order to maximise the benefit of the resource. Click the button below to inform us of any relevant resources that are missing from this list.

[Inform us of other resources](#)

Type

- Guidance
- Tool
- Training

Phase

- Analyse
- Collect
- Plan
- Preserve
- Process
- Reuse
- Share

Level

- Advanced
- Basic
- Intermediate

Training

BAS Online

Content provider: SND

[See details](#)

Training

Data organisation module

Content provider: NBIS

[See details](#)

Training

Data publication module

Content provider: NBIS

[See details](#)

Training

DMP module

Content provider: NBIS

[See details](#)

Training

Introduction to data management practices

Content provider: NBIS

[See details](#)

Training

KTH calendar with upcoming events such as DMP workshops, PhD seminars etc

Content provider: KTH

[See details](#)

Training

Metadata module

Content provider: NBIS

[See details](#)

Training

NBIS course catalogue

Content provider: NBIS

[See details](#)

Training

Online course on Open science and data management

Content provider: KTH

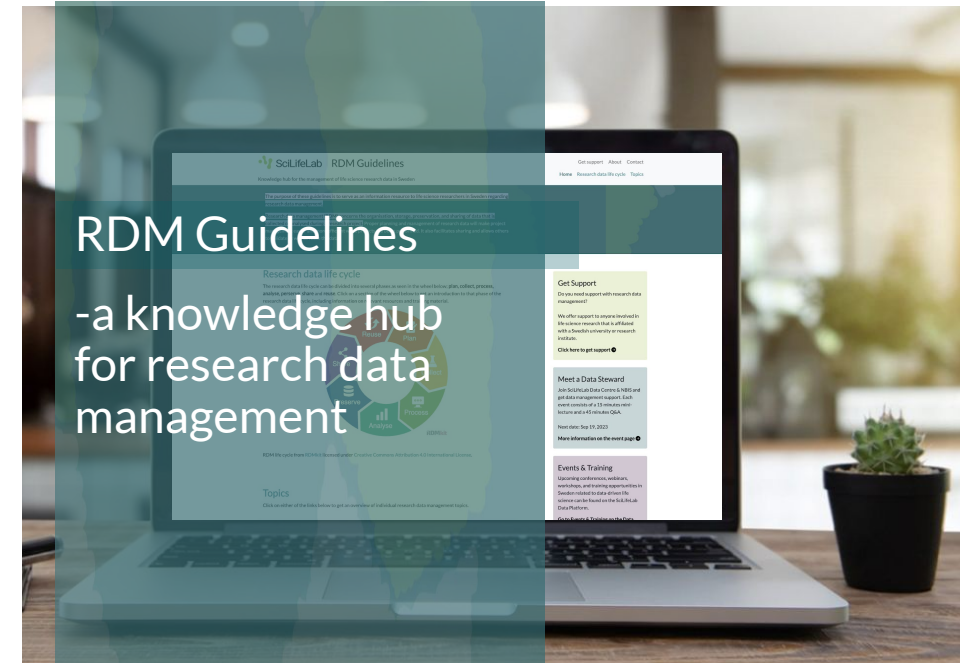
[See details](#)

SciLifeLab RDM Guidelines



- Knowledge hub for management of life science research data in Sweden

- **Webbportal** med goda exempel på hur forskare kan följa **FAIR** principerna.
- Hur man **maximerar** värdet av **forskningsdata** under datats livscykel
- Bygger på ett svenskt life science perspektiv
- **Helpdesk** för datahanteringsfrågor
- **Samlar** vägledande **information**, verktyg och utbildningsmaterial från andra aktörer



Topics:

What is RDM?

Data transfer

Human data

FAIR principles

<https://data-guidelines.scilifelab.se>



Diskussion

Hur kan vi samordna information och resurser med varandra?

Hur skulle ni vilja att ett samarbete med SciLifeLab Data Management Support ser ut?

Tack för uppmärksamheten så här långt!



UMEÅ
UNIVERSITET



data-management@scilifelab.se